

TRAFFIC MANAGEMENT UNIT

Proposed Prohibition of Stopping – Failsworth Area

Report to Executive Director, Commercial Services

Portfolio Holder : Councillor D Hibbert - Environment and Housing

11 September 2013

Officer Contact : Darryll Elwood
Ext. 1946

Purpose of Report

The purpose of this report is to consider a request from the current administration to provide mandatory No Stopping Orders for all schools within the Borough of Oldham. This report will consider the Failsworth District as shown in the schedule at the end of this report.

Recommendation

It is recommended that schools within the Failsworth District have a mandatory Prohibition of Stopping Order implemented outside the entrance to the school. This will provide a safer location for pedestrians to cross at the start and finish of the school day.

Any existing mandatory Prohibition of Stopping Orders that require amendment should be revoked and replaced with an Order that reflects the markings out on site. Any school with an advisory Prohibition of Stopping Order should have the Order made mandatory and any school without a Prohibition of Stopping Order should have a mandatory Order implemented where possible.

Proposed Prohibition of Stopping – Failsworth Area

1 Background

- 1.1 As more children are now being driven to and from school there is an increased demand for parking outside of schools at the start and finish of the school day. Due to parents wishing to park as close as possible to the school entrance; pedestrians are being placed at risk trying to cross the road between closely parked vehicles. These vehicles are also causing an obstruction to other motorists due to inconsiderate or double parking which stops the free flow of traffic outside schools at certain times of the day.

2 Current Position

- 2.1 There are currently nine schools within the Failsworth District, eight Primary schools and one Secondary school. Out of the nine schools six already have existing mandatory Prohibition of Stopping markings and three have advisory markings.
- 2.2 Although the six schools with mandatory Prohibition of Stopping markings already have Traffic Regulation Orders; site investigations have shown the schedules relating to these Orders need to be modified. It is proposed the current Orders be revoked and replaced with a new Order which reflects the markings out on site.
- 2.3 Three of the schools within the Failsworth District have advisory Prohibition of Stopping markings; these markings require Orders making to allow enforcement to take place.

3 Justification

- 3.1 To stop obstructive parking outside the schools and allow enforcement to take place, all nine schools will need a mandatory Prohibition of Stopping Order making and the implementation of a marking and signs erected at the entrance to each school.

4 Consultations

- 4.1 G.M.P. View - The Chief Constable has been consulted and has no objection to this proposal.
- 4.2 T.f.G.M. View - The Director General has been consulted and has no comment on this proposal.

4.3 G.M. Fire Service View - The County Fire Officer has been consulted and has no comment on this proposal.

4.4 N.W. Ambulance Service View - The County Ambulance Officer has been consulted and has no comment on this proposal.

5 **Comments Of Failsworth East and Failsworth West Councillors**

5.1 The Ward Councillors have been consulted and <>

6 **Financial Implications**

	£
6.1 Cost of Lines	3210.00
Cost of Signs and Poles	1800.00
Advertisement of Order	4000.00
TOTAL	9010.00
Annual Maintenance Costs	901.55

7 **Legal Services' Comments**

7.1 <>

8 **Cooperative Agenda**

8.1 In respect of proposed Prohibition of Stopping within the Failsworth District there are no Co-operative issues or opportunities arising and the proposals are in line with the Council's Ethical Framework.

9 **Human Resources Comments**

9.1 None.

10 **Risk Assessments**

10.1 None.

11 **IT Implications**

11.1 None.

12 **Property Implications**

12.1 None.

13 **Procurement Implications**

13.1 None.

14 Environmental And Health & Safety Implications

14.1 Energy – Nil.

14.2 Transport – Nil.

14.3 Pollution – Nil.

14.4 Consumption and Use of Resources – In accordance with current specifications.

14.5 Built Environment – Minor alterations to visual appearance of area.

14.6 Natural Environment – Nil.

14.7 Health and Safety – This proposal would improve the safety in the area for all road users.

15 Equality, Community Cohesion and Crime Implications

15.1 By creating a safer environment the proposal will meet the aspirations of residents and have a positive effect on community cohesion.

16 Equality Impact Assessment Completed?

16.1 No.

17 Key Decision

17.1 No.

18 Forward Plan Reference

18.1 Not applicable.

19 Background Papers

19.1 The following is a list of background papers on which this report is based in accordance with the requirements of Section 100(1) of the Local Government Act 1972. It does not include documents which would disclose exempt or confidential information as defined by the Act :

File Ref : TM3/813

Name of File : Proposed Prohibition of Stopping – Failsworth Area

Officer Name : Mr D Dalrymple

Contact No : 0161 770 5243

20 **Proposal**

20.1 It is proposed to introduce a Traffic Regulation Order to prohibit vehicles stopping on the School Keep Clear markings within the Failsworth District as detailed in the schedule below.

Revoke the following Orders

Schedule

Column 1	Column 2	Column 3	Column 4	Column 5
Item No	Length of Road	Duration	Exemptions	No Stopping
F114	<u>Clive Road</u> (South West Side) From a point 47 metres north west of its junction with Ogden Road for a distance of 70 metres in a north westerly direction	8am-5pm Mon-Fri	B1, B3, B4, C, E, J	
F114	<u>Clive Road</u> (South West Side) From a point 81 metres south east of its junction with Propps Hall Drive for a distance of 32 metres in a south easterly direction	8am-5pm Mon-Fri	B1, B3, B4, C, E	
F114	<u>Clive Road</u> (West Side) From its junction with Propps Hall Drive for a distance of 18 metres in a south easterly direction	8am-5pm Mon-Fri	B1, B3, B4, C, E	

F114	<u>Propps Hall Drive</u> (South Side) From its junction with Clive Road for a distance of 78 metres in a south westerly direction	8am-5pm Mon-Fri	B1, B3, B4, C, E	
F106	<u>Brierley Avenue</u> (Both Sides) From a point 68 metres from its junction with Ashton Road East for a distance of 27 metres in a south westerly direction	8am-5pm Mon-Fri	B1, B3, B4, C, E	
F106	<u>Brierley Avenue</u> (North Side) From a point 147 metres from its junction with Ashton Road East for a distance of 24.6 metres in a south westerly direction	8am-5pm Mon-Fri	B1, B3, B4, C, E	
F106	<u>Brierley Avenue</u> (South Side) From a point 147 metres from its junction with Ashton Road East for a distance of 43.6 metres in a south westerly direction	8am-5pm Mon-Fri	B1, B3, B4, C, E	

F106	<u>Brierley Avenue</u> (Both Sides) From a point 206 metres from its junction with Ashton Road East for a distance of 21 metres in a south westerly direction	8am-5pm Mon-Fri	B1, B3, B4, C, E	
F106	<u>Brierley Avenue</u> (Both Sides) From a point 253 metres from its junction with Ashton Road East for a distance of 26 metres in a south westerly direction	8am-5pm Mon-Fri	B1, B3, B4, C, E	
F95	<u>Paddock Lane</u> (West Side) At the entrance to South Failsworth Primary School on a school entrance marking	8am-5pm Mon-Fri	B1, B3, B4, C, E	
F113	<u>Stansfield Road</u> (West Side) At the entrance to Higher Failsworth Primary School on the school entrance markings	8am-5pm Mon-Fri	B1, B3, B4, C, E	
F116	<u>Mather Street</u> (North West Side) On the entrance to Mather Street Primary School on the school entrance markings	8am-5pm Mon-Fri	B1, B3, B4, C, E	

Introduce the following Orders

Schedule

Column 1 Item No	Column 2 Length of Road	Column 3 Duration	Column 4 Exemptions	Column 5 No Loading
	<p><u>Clive Road</u> (South Side)</p> <p>From a point 47 metres north west of its junction with Ogden Road for a distance of 43 metres in a north westerly direction</p>	8am-5pm Mon-Fri	B1, B3, B4, C, E	
	<p><u>Clive Road</u> (South Side)</p> <p>From a point 90.2 metres north west of its junction with Ogden Road for a distance of 28 metres in a north westerly direction</p>	8am-5pm Mon-Fri	B1, B3, B4, C, E	
	<p><u>Clive Road</u> (South Side)</p> <p>From a point 146.2 metres north west of its junction with Ogden Road for a distance of 31.7 metres in a north westerly direction</p>	8am-5pm Mon-Fri	B1, B3, B4, C, E	
	<p><u>Clive Road</u> (West Side)</p> <p>From its junction with Propps Hall Drive for a distance of 18 metres in a south easterly direction</p>	8am-5pm Mon-Fri	B1, B3, B4, C, E	

	<p><u>Propps Hall Drive</u> (South Side)</p> <p>From a point 94 metres north east of its junction with Brooks Drive for a distance of 31.5 metres in a north easterly direction</p>	<p>8am-5pm Mon-Fri</p>	<p>B1, B3, B4, C, E</p>	
	<p><u>Propps Hall Drive</u> (South Side)</p> <p>From a point 125.7 metres north east of its junction with Brooks Drive for a distance of 38 metres in a north easterly direction</p>	<p>8am-5pm Mon-Fri</p>	<p>B1, B3, B4, C, E</p>	
	<p><u>Propps Hall Drive</u> (South Side)</p> <p>From a point 163.9 metres north east of its junction with Brooks Drive for a distance of 14.7 metres in a north easterly direction</p>	<p>8am-5pm Mon-Fri</p>	<p>B1, B3, B4, C, E</p>	
	<p><u>Brierley Avenue</u> (North Side)</p> <p>From a point 69.2 metres south west of its junction with Ashton Road East for a distance of 25.7 metres in a south westerly direction</p>	<p>8am-5pm Mon-Fri</p>	<p>B1, B3, B4, C, E</p>	

	<p><u>Brierley Avenue</u> (North Side)</p> <p>From a point 150.2 metres south west of its junction with Ashton Road East for a distance of 25.5 metres in a south westerly direction</p>	<p>8am-5pm Mon-Fri</p>	<p>B1, B3, B4, C, E</p>	
	<p><u>Brierley Avenue</u> (North Side)</p> <p>From a point 207.7 metres south west of its junction with Ashton Road East for a distance of 27.5 metres in a south westerly direction</p>	<p>8am-5pm Mon-Fri</p>	<p>B1, B3, B4, C, E</p>	
	<p><u>Brierley Avenue</u> (North Side)</p> <p>From a point 257 metres south west of its junction with Ashton Road East for a distance of 25.5 metres in a south westerly direction</p>	<p>8am-5pm Mon-Fri</p>	<p>B1, B3, B4, C, E</p>	
	<p><u>Brierley Avenue</u> (South Side)</p> <p>From a point 70.6 metres south west of its junction with Ashton Road East for a distance of 27.5 metres in a south westerly direction</p>	<p>8am-5pm Mon-Fri</p>	<p>B1, B3, B4, C, E</p>	

	<p><u>Brierley Avenue</u> (South Side)</p> <p>From a point 154.1 metres south west of its junction with Ashton Road East for a distance of 43.5 metres in a south westerly direction</p>	<p>8am-5pm Mon-Fri</p>	<p>B1, B3, B4, C, E</p>	
	<p><u>Brierley Avenue</u> (South Side)</p> <p>From a point 211.6 metres south west of its junction with Ashton Road East for a distance of 27.5 metres in a south westerly direction</p>	<p>8am-5pm Mon-Fri</p>	<p>B1, B3, B4, C, E</p>	
	<p><u>Brierley Avenue</u> (South Side)</p> <p>From a point 260.6 metres south west of its junction with Ashton Road East for a distance of 25.5 metres in a south westerly direction</p>	<p>8am-5pm Mon-Fri</p>	<p>B1, B3, B4, C, E</p>	
	<p><u>Paddock Lane</u> (West Side)</p> <p>From a point 101 metres west of its junction with Newton Street for a distance of 43 metres in a northerly direction</p>	<p>8am-5pm Mon-Fri</p>	<p>B1, B3, B4, C, E</p>	

	<p><u>Paddock Lane</u> (West Side)</p> <p>From a point 144.2 metres west of its junction with Newton Street for a distance of 31 metres in a northerly direction</p>	<p>8am-5pm Mon-Fri</p>	<p>B1, B3, B4, C, E</p>	
	<p><u>Stansfield Road</u> (West Side)</p> <p>From a point 53 metres south of its junction with Minor Street for a distance of 30 metres in a southerly direction</p>	<p>8am-5pm Mon-Fri</p>	<p>B1, B3, B4, C, E</p>	
	<p><u>Stansfield Road</u> (West Side)</p> <p>From a point 83.2 metres south of its junction with Minor Street for a distance of 31 metres in a southerly direction</p>	<p>8am-5pm Mon-Fri</p>	<p>B1, B3, B4, C, E</p>	
	<p><u>Mather Street</u> (North Side)</p> <p>From a point 125 metres south west of its junction with Ward Street for distance of 32 metres in a south westerly direction</p>	<p>8am-5pm Mon-Fri</p>	<p>B1, B3, B4, C, E</p>	

	<u>Ashton Road</u> (South Side) From a point 160 metres north east of its junction with Hartshead Crescent for a distance of 28 metres in a north easterly direction	8am-5pm Mon-Fri	B1, B3, B4, C, E	
	<u>James Street</u> (West Side) From a point 23.5 metres south east for its junction with Tatchbury Road for a distance of 25.5 metres in a south easterly direction	8am-5pm Mon-Fri	B1, B3, B4, C, E	
	<u>Ashton Road East</u> (North Side) From a point 30 metres north east of its junction with Pole Lane for a distance of 32.5 metres in a north easterly direction	8am-5pm Mon-Fri	B1, B3, B4, C, E	

Report Tracking	
Where	When
EMT	
Leadership	
Joint Leadership	
Overview & Scrutiny	




This map is reproduced from Ordnance Survey material with the permission of Ordnance Survey on behalf of the Controller of Her Majesty's Stationery Office. Crown Copyright. Unauthorised reproduction in any form or by any means may lead to prosecution. Ordnance Survey, Oldham, Manchester, Borough Council Licence No. 100018699

		HIGHWAYS & ENGINEERING Henshaw House, Cheapside, Oldham OL1 1NY	
		Project Proposed School Keep Clear File: TM/3813	Title Woodhouses Voluntary Primary School Ashton Road Failsworth
Drawn by JW	Date 8/13	Purpose of issue	Drawing No. 47/A4/1327/1F
Checked by DE	Date 8/13	Scale 1:1250	Rev.
Approved by SR	Date 8/13		

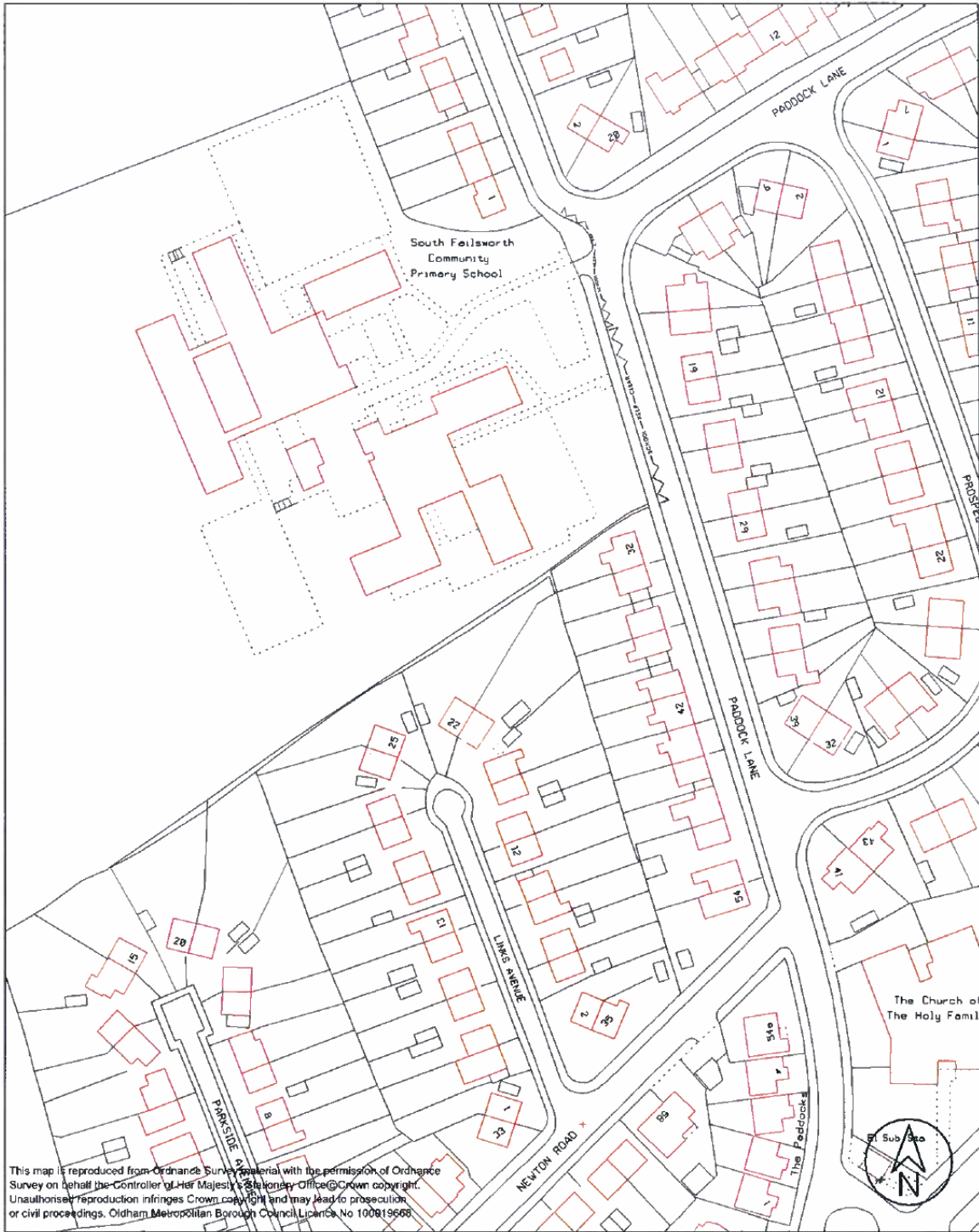



Client St John's CE Junior School James Street Falsworth		Title St John's CE Junior School James Street Falsworth	
Project Proposed School Keep Clear File: TM3/813		Drawing No. 47/A4/1327/2F	
Drawn by JW	Date 8/13	Purpose of issue	Rev. .
Checked by DE	Date 8/13	Scale 1:1250	
Approved by SR	Date 8/13		

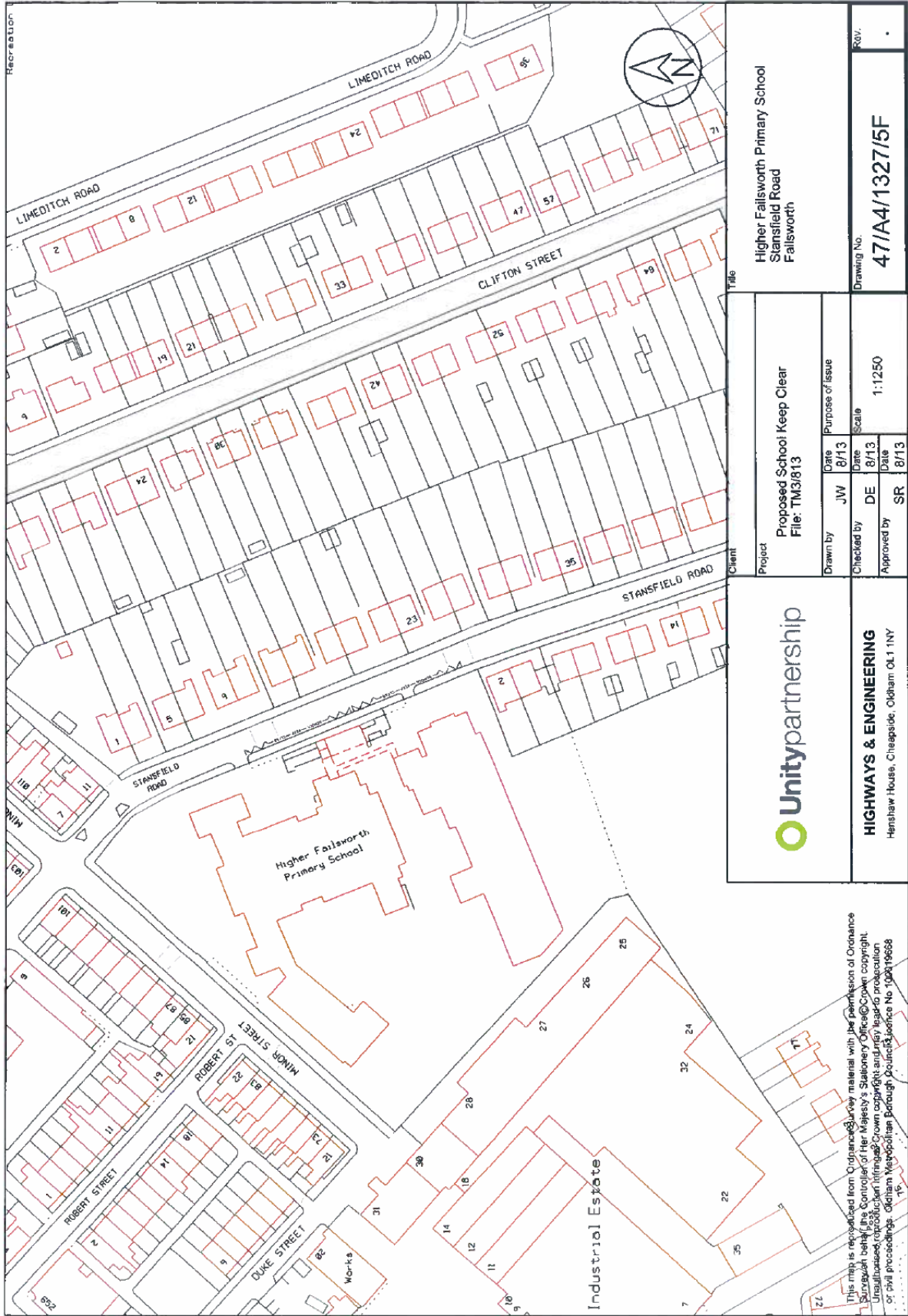


HIGHWAYS & ENGINEERING
 Henshaw House, Cheapside, Okham OX1 1NY

This map is reproduced from Ordnance Survey material with the permission of Ordnance Survey on behalf of the Controller of Her Majesty's Stationary Office. Crown copyright. Unauthorised reproduction infringes Crown copyright and may lead to prosecution or civil proceedings. Okham Metropolitan Borough Council Licence No 100019668

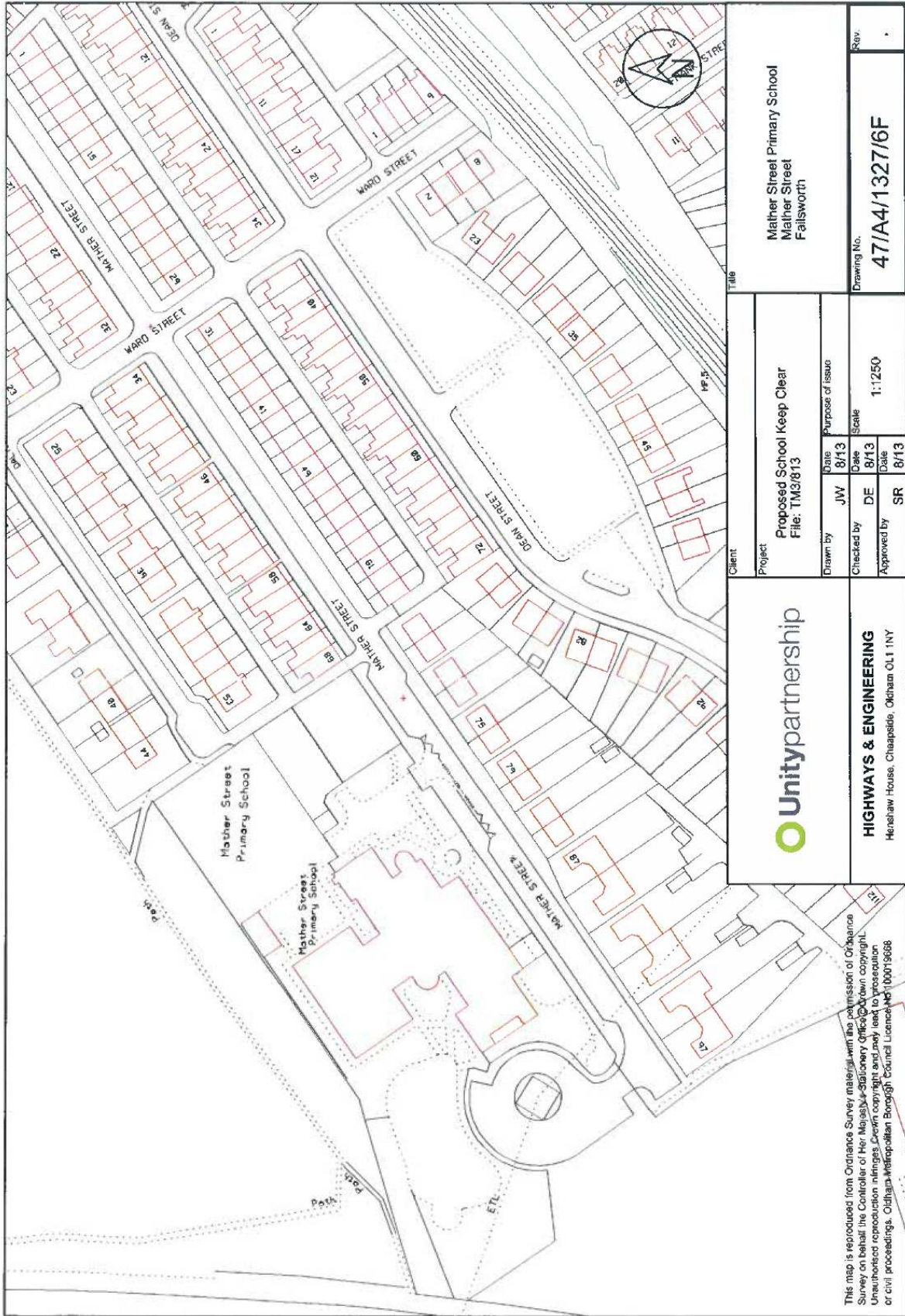


	Client		Title	
	Project		South Fallsworth Primary School Paddock Lane Fallsworth	
HIGHWAYS & ENGINEERING Henshaw House, Cheapside, Oldham OL1 1NY	Drawn by	Date	Purpose of issue	
	JW	8/13		
	Checked by	Date	Scale	
	DE	8/13	1:1250	
	Approved by	Date	Drawing No.	Rev.
	SR	8/13	47/A4/1327/4F	.



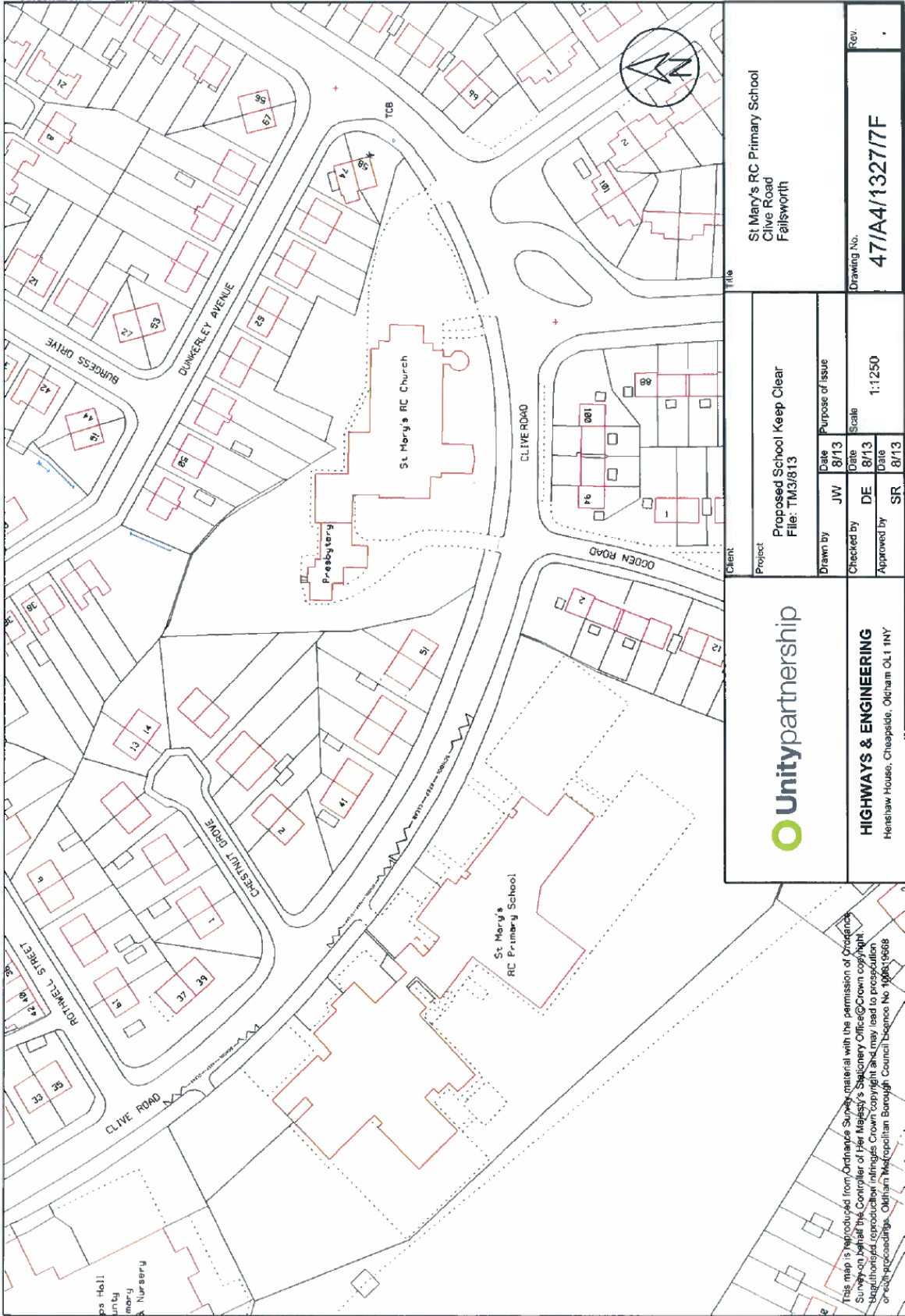
Client Higher Fallsworth Primary School Stansfield Road Fallsworth		Title Higher Fallsworth Primary School Stansfield Road Fallsworth	
Project Proposed School Keep Clear File: TM3/813		Drawing No. 47/A4/1327/5F	
Drawn by JW	Date 8/13	Purpose of Issue Scale 1:1250	Rev. .
Checked by DE	Date 8/13	Scale 1:1250	
Approved by SR	Date 8/13		
		HIGHWAYS & ENGINEERING Henshaw House, Chapeaside, Oldham OL1 1NY	

This map is reproduced from Ordnance Survey material with the permission of Ordnance Survey under license. The Controller of Her Majesty's Stationery Office © Crown copyright. Unauthorised reproduction infringes Crown copyright and may lead to prosecution or civil proceedings. Oldham Metropolitan Borough Council Licence No. 100419668



Client Mather Street Primary School Mather Street Fallsworth		Title Mather Street Primary School Mather Street Fallsworth	
Project Proposed School Keep Clear File: TM31813		Drawing No. 47/A4/1327/6F	
Drawn by JW	Date 8/13	Purpose of issue Scale	Scale 1:1250
Checked by DE	Date 8/13	Approved by SR	Date 8/13
Client 		HIGHWAYS & ENGINEERING Henshaw House, Chaapolds, Oldham OL1 1NY	

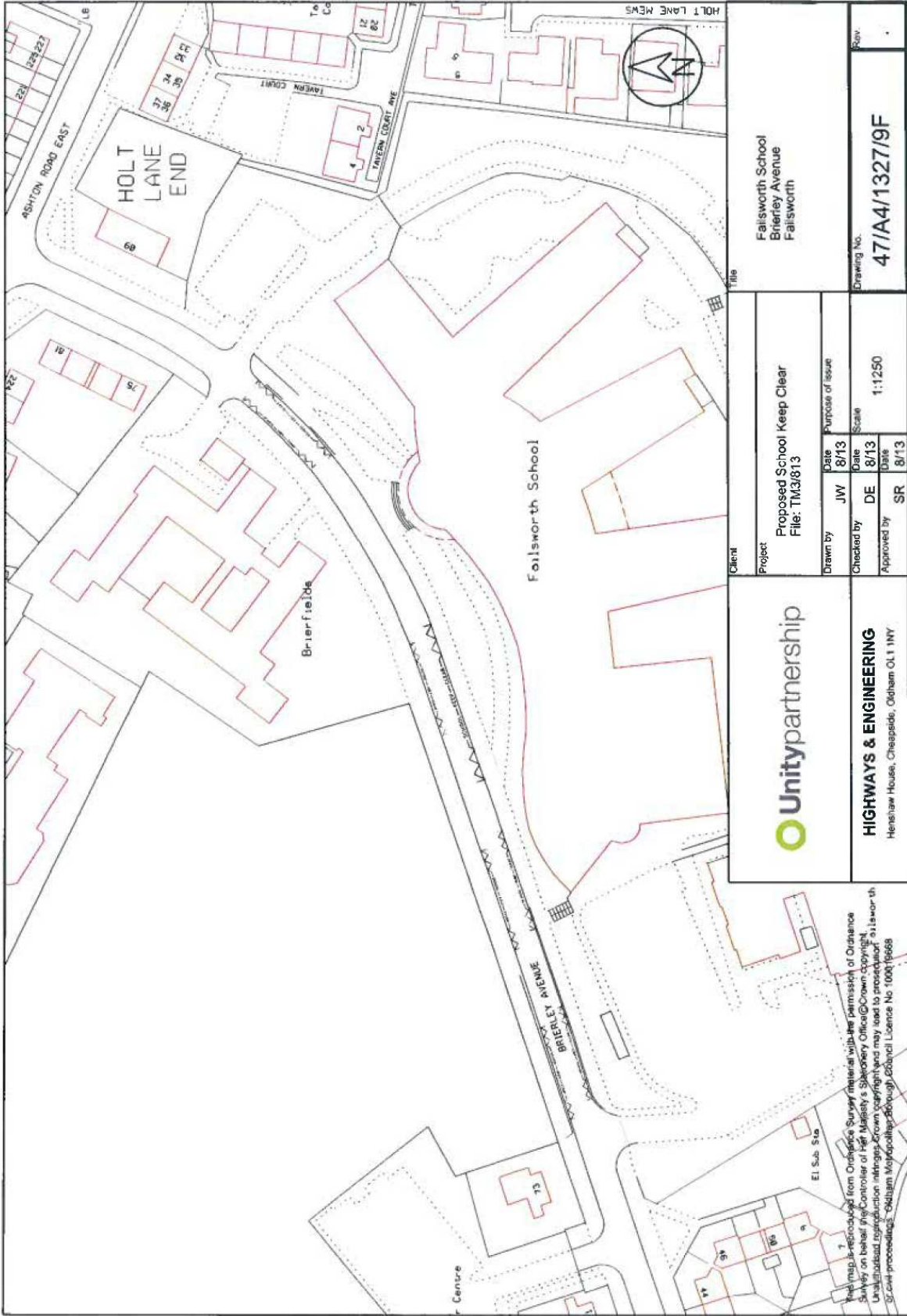
This map is reproduced from Ordnance Survey material with the permission of Ordnance Survey on behalf of the Controller of Her Majesty's Stationery Office. Crown copyright. Unauthorised reproduction in any form is prohibited. Ordnance Survey Licence No: 100019668





		HIGHWAYS & ENGINEERING Honshaw House, Cheapside, Oldham OL1 1NY	
Client	Propps Hall County Primary School Propps Hall Drive Fallsworth		
Project	Proposed School Keep Clear File: TM3/813		
Drawn by	JW	Date	8/13
Checked by	DE	Date	8/13
Approved by	SR	Date	8/13
		Purpose of Issue	
		Scale	1:1250
		Drawing No.	47/A4/1327/8F
		Rev	.

This map is reproduced from Ordnance Survey material with the permission of Ordnance Survey on behalf of the Controller of Her Majesty's Stationery Office. Crown copyright. Unauthorised reproduction infringes Crown copyright and may lead to prosecution or other proceedings. Oldham Metropolitan Borough Council Licence No. 100014668



Client
 Fallsworth School
 Brierley Avenue
 Fallsworth

Title
 Proposed School Keep Clear
 File: TM33813

Drawn by	JW	Date	8/13	Purpose of issue
Checked by	DE	Date	8/13	Scale
Approved by	SR	Date	8/13	1:1250

Drawing No.
47/A4/1327/9F

Unitypartnership

HIGHWAYS & ENGINEERING
 Henshaw House, Chappside, Okham, OLT1 1NY

The map is reproduced from Ordnance Survey material with the permission of Ordnance Survey on behalf of the Controller of Her Majesty's Stationery Office. Crown copyright. Unauthorised reproduction infringes Crown copyright and may lead to prosecution or civil proceedings. Okham Mapwork Ltd. Ordnance Survey Licence No. 100016668